



GAT MONTHLY MEMBERSHIP PROGRESS REPORT

Results as of: 3/31/2023

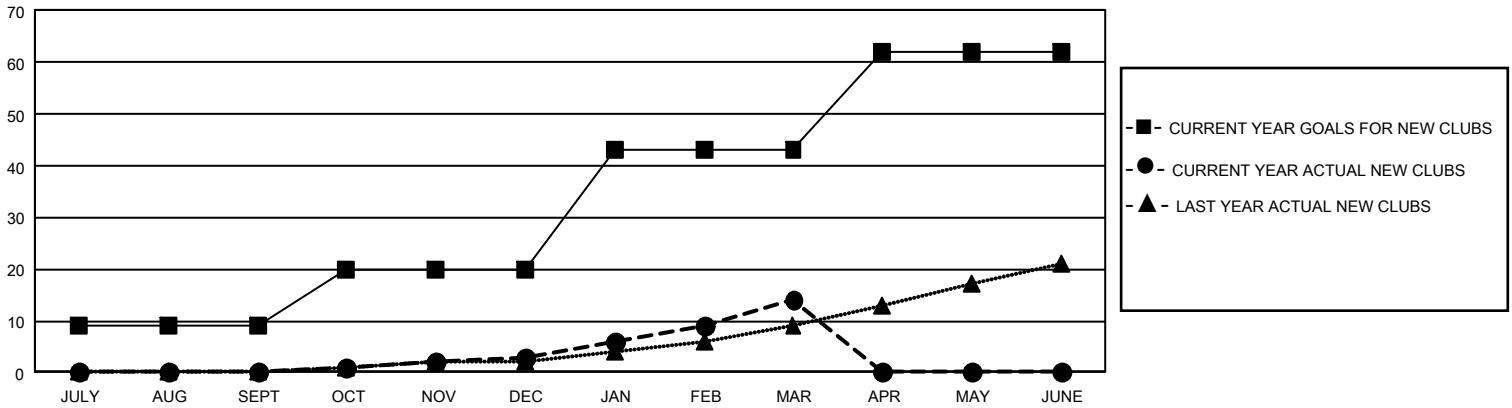
GAT Constitutional Area 5 - Japan

REPORT DOES NOT INCLUDE CLUBS IN UNDISTRICTED AREAS.

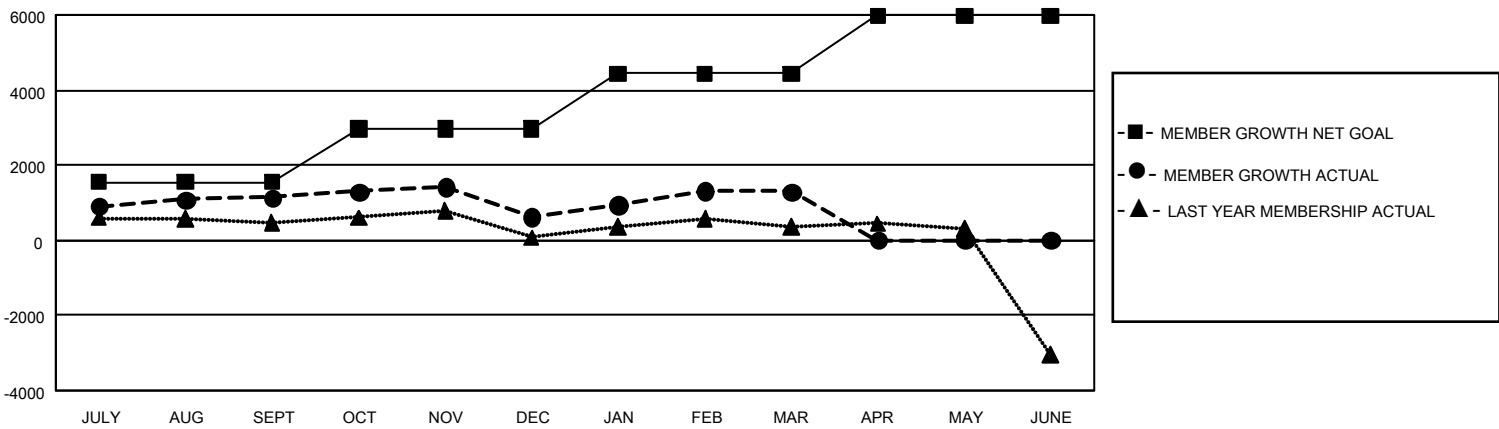
Clubs			
RESULTS FOR 2022-2023			
QUARTER	NEW CLUB GOAL	NEW CLUBS	DROPPED CLUBS
JULY/AUG/SEPT	27	0	5
OCT/NOV/DEC	33	3	5
JAN/FEB/MAR	69	11	3
APR/MAY/JUNE	57	0	0

Members			
RESULTS FOR 2022-2023			
QUARTER	MEMBER GROWTH NET GOAL	MEMBER GROWTH ACTUAL	DROPPED MEMBERS ACTUAL (including transfers)
JULY/AUG/SEPT	1540	2,714	1,429
OCT/NOV/DEC	1435	1,318	1,776
JAN/FEB/MAR	1461	2,078	1,313
APR/MAY/JUNE	1540	0	0

GOALS AND ACTUAL NEW CLUBS CUMULATIVE



GOALS AND ACTUAL MEMBERS CUMULATIVE



DROPPED CLUBS: 13	1,839 CLUBS OF 2,819 ADDED 1 OR MORE NEW MEMBERS	GENDER DISTRIBUTION	
		MALE 76,483 (76.36%)	FEMALE 23,669 (23.63%)
DROPPED MEMBERS		NON BINARY 0 (0.00%)	PREFER NOT TO ANSWER 9 (0.01%)
DECEASED 653	CLICK HERE FOR CUMULATIVE MEMBERSHIP DATA	TOTAL FAMILY UNIT MEMBERS 33,645	
CLUB CANCELLED 18		FAMILY MEMBERS PAYING HALF DUES 18,615	
OTHER 3,846			
TOTAL 4,517			